
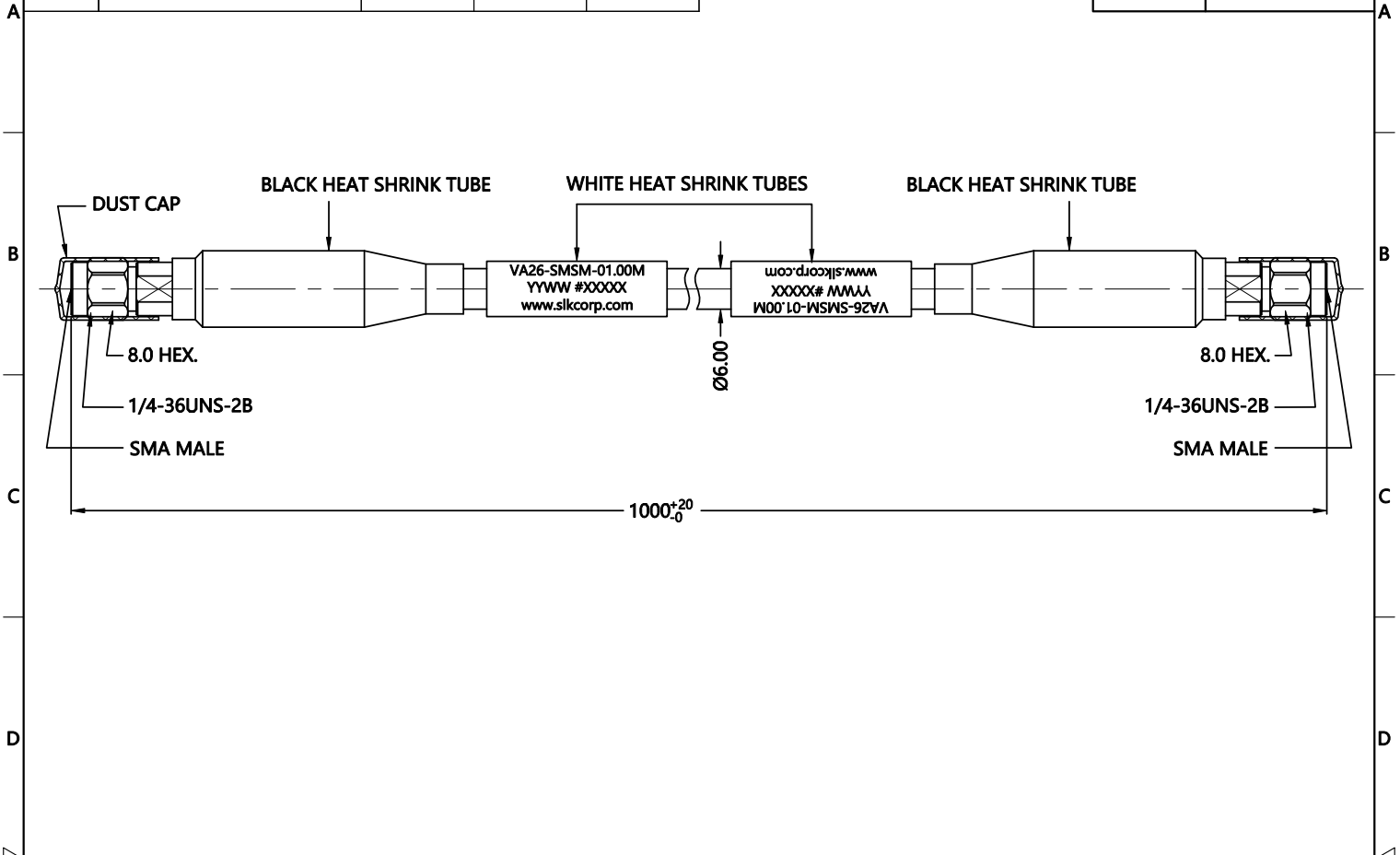


REV.	DESCRIPTION	ECN NO.	NAME	DATE	 ALL PARTS MUST MEET TO RoHS REQUIREMENTS
0	FIRST EDITION	N/A	HRWEI	2021-03-23	



MATERIALS AND PLATING UNIT: MICRO-INCHES			
PART TYPE	PART NAME	MATERIALS	PLATING
SMA S/T MALE	BODY/SHELL	STAINLESS STEEL	PASSIVATION
	INSULATOR	PTFE ASTM-D-1710	N/A
	CONTACT PIN	BERYLLIUM COPPER	GOLD /COPPER
	DUST CAP	PVC	BLACK
CABLE	TEST CABLE		
ARMOR	Red/Black PTFE Stainless Steel Spring Armor		

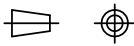
ELECTRICAL CHARACTERISTICS	
IMPEDANCE	50 Ω
VOLTAGE RATING	250 V(rms)
FREQUENCY RANGE	DC ~ 26.5 GHz
DIELECTRIC WITHSTANDING VOLTAGE	>750 V
INSULATION RESISTANCE	>5000 MΩ
INSERTION LOSS	<3.1 dB
VSWR	<1.30
RF- LEAKAGE	>90 dB
MECHANICAL PHASE STABILITY	±5° @26.5GHz
MECHANICAL AMPLITUDE STABILITY	<±0.05 dB

MECHANICAL CHARACTERISTICS		
MIN.	BENDING RADIUS ,STATIC	30 mm
MIN.	BENDING RADIUS ,REPEATED	60 mm
RECOMMENDED COUPLING TORQUE		7-10 in-lbs
COUPLING NUT RETENTION FORCE		>60 lbs
DURABILITY		>500 cycles
CABLE RETENTION FORCE		>80 lbs
CRUSH RESISTANCE		40 KN/M

ENVIRONMENTAL PARAMETER	
TEMPERATURE RANGE	-40 °C~+85 °C

*** CUSTOMER OUTLINE DRAWING**

UNLESS OTHERWISE SPECIFIED:
 1) EDGES : N/A ;
 2) REMOVE ALL BURRS : N/A ;
 3) SURFACE ROUGHNESS : N/A ;
 4) UNITS : mm ;
 5) DIMENSIONS TOLERANCES
 DECIMALS : .x ±5, .xx ±2, .xxx±1;
 ANGLES : ±10°.

THIRD ANGLE PROJECTION		
APPROVED :	CUSTOMER P/N :	
CHECKED :	SCALE : 1 : 1	
DRAWING :	DATE : 2021-03-23	

SLK
— SUPERLINK —

TITLE : SMA MALE S/T TO SMA MALE S/T FOR TEST CABLE

DRAWING NO. : VA26-SMSM-01.00M

COMPANY WEBSITE : www.slkcorp.com

CUSTOMER OUTLINE DRAWING